

HEALTHCARE PROJECTS



HOSPITAL ADDITION

ROY LESTER SCHNEIDER HOSPITAL

Architectural design and construction administration services for the new Oxygen Generator Enclosure for RLS Hospital on St. Thomas. The project consists of demolition of an existing tank storage area and construction of an addition to the hospital for housing a new oxygen generator with air compressors, compressed air storage tanks, booster tanks, and 60 cylinder capacity filling station with manifolds, and backup capacity of 168 K type cylinders and 72 E type cylinders. The project is part of the hospital's COVID-19 preparation efforts.



MEDICAL OFFICES

PEAK MEDICAL CORPORATION

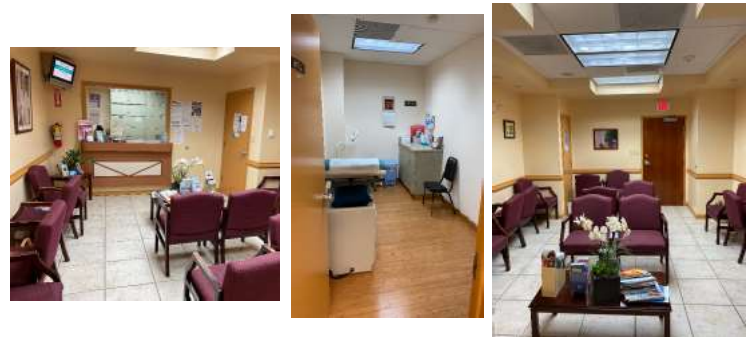
Architectural design and construction administration services for the build-out for Peak Medical Corporation's medical offices. The project is located in the Paragon Medical Building in St. Thomas, VI, and includes lobby with waiting area, reception desk, file room, staff work office, two exam rooms, procedure room, restrooms, doctor's offices.



MEDICAL OFFICES

VI OB/GYN ASSOCIATES

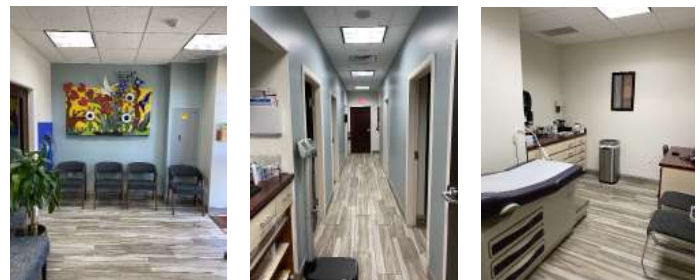
Architectural design and construction administration services for the build-out of the medical offices for VI. OB/GYN Associates. The project includes lobby with waiting area, reception desk, file room, staff work office, three exam rooms, breakroom, restrooms, and doctor's office. The project is located in the Paragon Medical Building in St. Thomas, VI.



MEDICAL OFFICES

COMPREHENSIVE OBSTETRICS AND GYNOCOLGY

Architectural services for the renovation of Comprehensive Obstetrics and Gynecology of the Virgin Islands. The project is located in St. Thomas, VI. Boschulte Architecture provided damage assessments and repair estimates after the 2017 hurricanes and assisted the client with finishes selections and FF&E and construction phase assistance during renovations.



LABORATORY

CRANSTON DOTTIN BIOMEDICAL LABORATORY

Architectural design and construction administration services for the renovation and build-out of the Cranston-Dottin Biomedical Laboratory on St. Thomas, VI. The project is located in St. Thomas, VI. The project included new waiting room, receptionist office, testing room, restroom, laboratory workspaces, bacti room, and fileroom, and storage spaces.

